



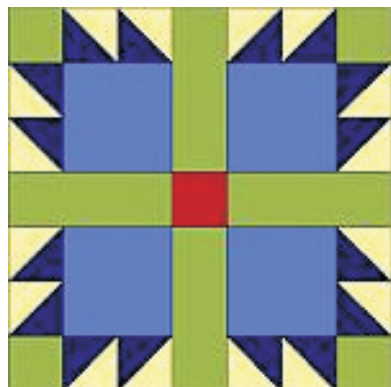
Bear's Paw

Skill level: Easy

Cutting method: rotary cutting

Fabrics: 5 colors
or 5 shades of
one color ranging
from very light to
very dark

Cutting: use the
chart below for the
size block you need.



This is a traditional block design and may be used by anyone. The instructions, however, are copyrighted and may not be reproduced without permission.

Quantity to cut	7" block	14" block	21" block
Light A: 8	2" x 2"	3" x 3"	4" x 4"
Light B: none			
Medium A: 4	1.5" x 3.5"	2.5" x 6.5"	3.5" x 9.5"
4	1.5" x 1.5"	2.5" x 2.5"	3.5" x 3.5"
Medium B: 4	2.5" x 2.5"	4.5" x 4.5"	6.5" x 6.5"
Dark A: 1	1.5" x 1.5"	2.5" x 2.5"	3.5" x 3.5"
Dark B: 8	2" x 2"	3" x 3"	4" x 4"

Block size refers to finished size.

Copyright 2011 Sandy Harris. All rights reserved. Photocopies allowed for personal use only. For all other uses, please contact the designer. Quilts and other tangible items made using this pattern belong to the maker who can do what she/he pleases with that item. Sundrop Designs, PO Box 322, Cottage Grove, OR 97424. www.sundropdesigns.com, sundropdesigns@yahoo.com.



Bear's Paw, page 2

Step 1

Use the 8 light A and dark B squares to make 16 half-square triangle units:

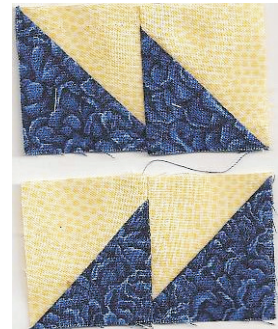
- A) Draw a line on the back side of each light square.
- B) Place light and dark square right sides together.
- C) Sew 1/4" from each side of drawn diagonal line.
- D) Cut squares in half on drawn diagonal line.

Press seams toward the dark fabric. Trim units to the same size as your dark A squares.



Step 2

Sew pairs of HST units together to make 4 pairs with points going left and 4 pairs with points going right. Press seams toward the dark fabric.



Step 3

Using the 4 pairs of HST units with points going to the right, sew a corner square (medium A) to the HST on the right. Press seam toward the corner square.



Step 4

Sew the left-pointing HST units to the medium A squares.



Step 5

Sew the units from step 3 to the units from step 4 - the corner square should be "cupped" by two very dark triangles. Press the seam in either direction (this means that it doesn't really matter which direction they are pressed).





Bear's Paw, page 3

Step 6

Now that the 4 "paws" are made, we'll assemble the block like a typical 9-patch block. I'm starting with the center row so that those little pieces have less time to get lost! Sew the small dark A square to one of the rectangles, then sew it to the other rectangle. Press seams toward the rectangles.



Step 7

Arrange the four "paws" on a flat surface. Sew a rectangle to the left side of the upper and lower right-side "paws." Press the seams toward the rectangles.



Step 8

Sew the left upper "paw" to the upper right "paw" unit. Sew the left bottom "paws" to the bottom right "paw" unit. Press seams toward the center rectangle.



Step 9

Sew the upper row of "paws" to the center row.



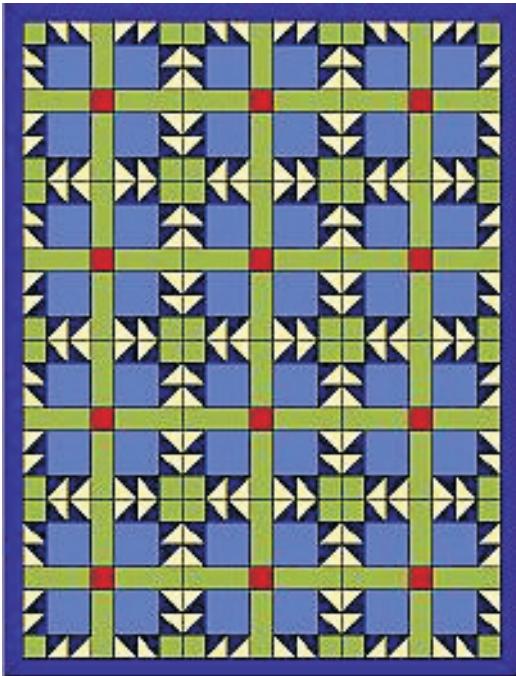
Step 10

Sew the bottom row of "paws" to the center row. Press seams toward the center.

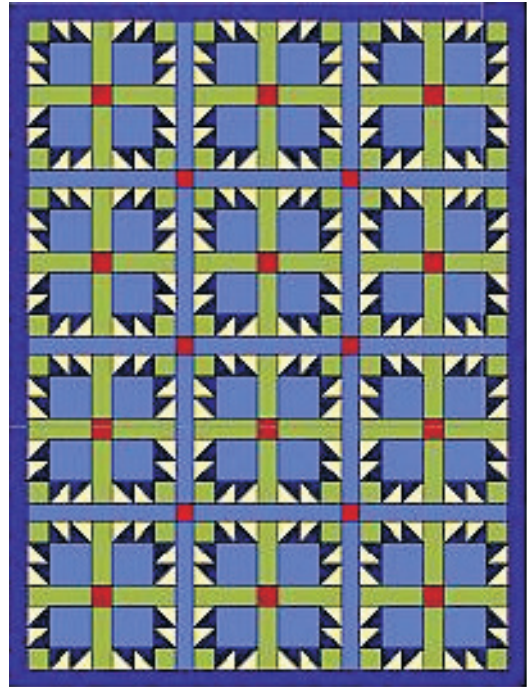
Press finished block and trim to square it if necessary.



Here's what this block looks like in some basic setting layouts:



without sashing



with sashing and cornerstones

Use the diagrams below to try your own color palettes.

